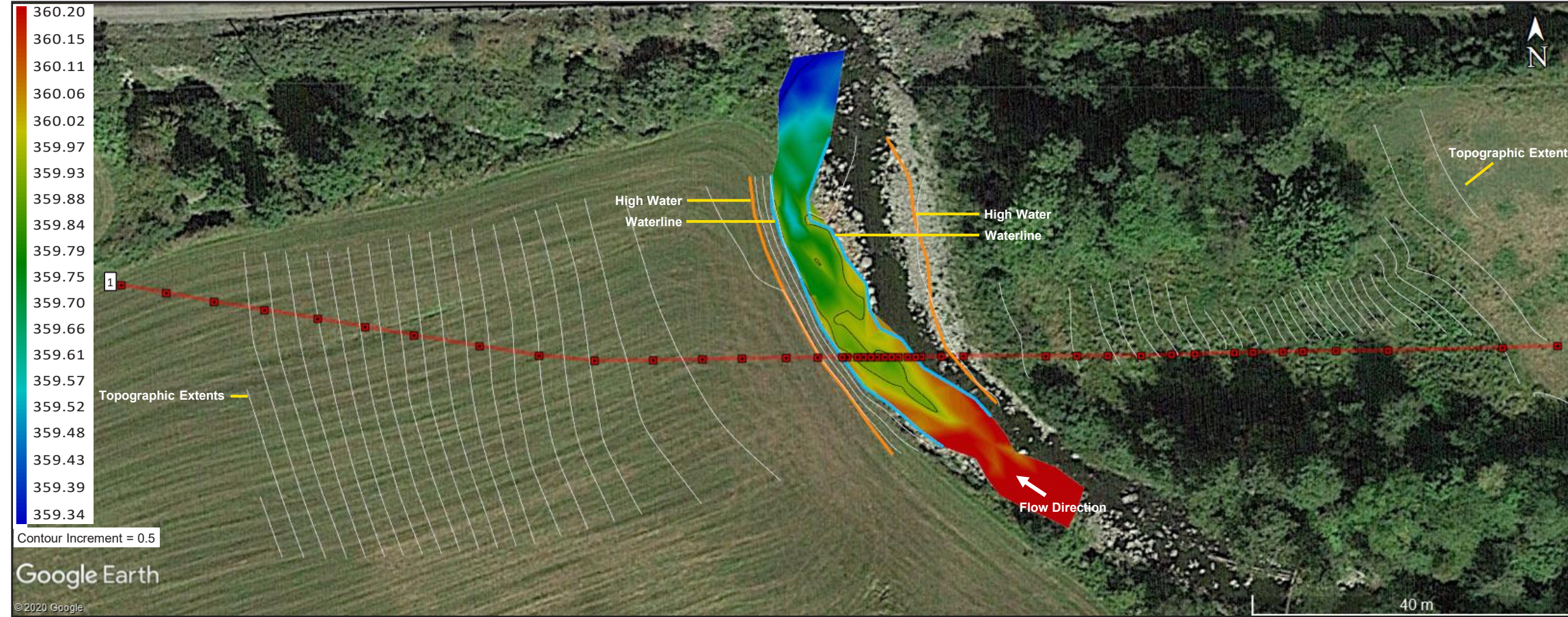


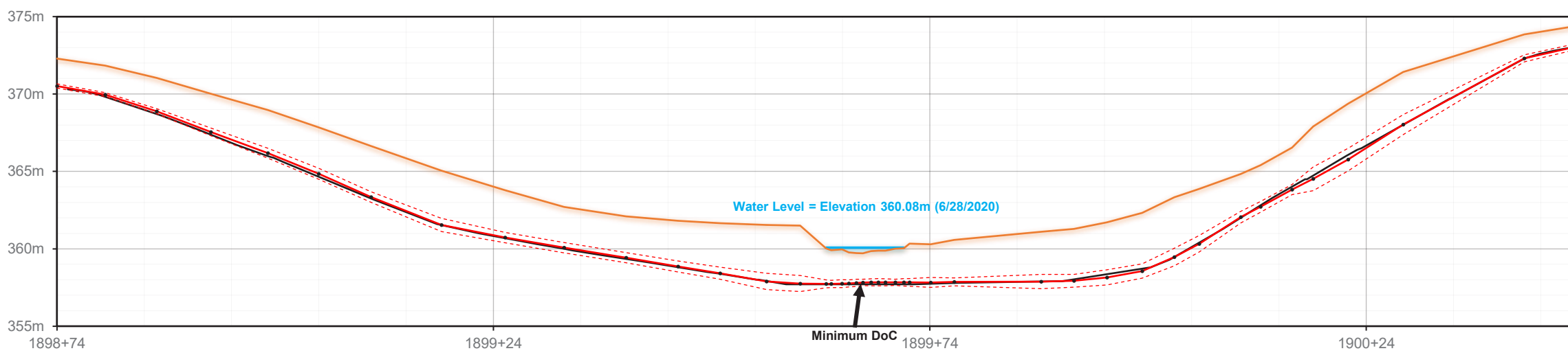
PLAN VIEW



DoC DATA


Pt. ID	STA#	Latitude	Longitude	Topo Elev. (m)	T.O.P. Elev. (m)	DoC (m)	MS DoC* (m)
1	1898+74			372.29	370.52	1.77	1.63
2	1898+79			371.84	369.97	1.87	1.74
3	1898+85			371.04	368.89	2.15	1.99
4	1898+91			370.02	367.56	2.46	2.22
5	1898+98			368.97	366.18	2.79	2.47
6	1899+04			367.84	364.85	3.00	2.64
7	1899+10			366.64	363.34	3.29	2.95
8	1899+18			365.05	361.55	3.51	3.08
9	1899+25			363.79	360.73	3.06	2.73
10	1899+32			362.71	360.08	2.64	2.30
11	1899+39			362.10	359.43	2.67	2.35
12	1899+45			361.81	358.86	2.95	2.59
13	1899+50			361.66	358.42	3.23	2.85
14	1899+55			361.54	357.89	3.65	3.13
15	1899+59			361.50	357.76	3.75	3.23
16	1899+62			360.02	357.74	2.28	2.03
17	1899+62			359.91	357.73	2.18	1.94
18	1899+64			359.97	357.75	2.21	1.95
19	1899+64			359.77	357.77	2.00	1.77
20	1899+65			359.73	357.80	1.93	1.70
21	1899+66			359.72	357.83	1.89	1.69
22	1899+67			359.85	357.83	2.01	1.79
23	1899+68			359.88	357.84	2.04	1.80
24	1899+69			359.87	357.84	2.03	1.81
25	1899+70			360.01	357.84	2.18	1.99
26	1899+71			360.04	357.83	2.21	1.96
27	1899+71			360.34	357.83	2.51	2.26
28	1899+74			360.30	357.82	2.47	2.15
29	1899+77			360.57	357.87	2.71	2.45
30	1899+86			361.10	357.88	3.22	2.76
31	1899+90			361.28	357.94	3.34	2.93
32	1899+94			361.71	358.15	3.55	3.07
33	1899+98			362.32	358.57	3.75	3.29
34	1900+02			363.33	359.47	3.85	3.28
35	1900+05			363.88	360.33	3.55	3.01
36	1900+09			364.83	362.05	2.79	2.41
37	1900+12			365.41	362.71	2.69	2.35
38	1900+15			366.54	363.82	2.72	2.39
39	1900+18			367.90	364.53	3.37	2.61
40	1900+22			369.38	365.77	3.61	2.88
41	1900+28			371.42	368.03	3.39	2.75
42	1900+42			373.85	372.30	1.55	1.32
43	1900+48			374.46	373.16	1.30	1.12

PROFILE VIEW



Land Data
Underwater Data
Italics = Projected topo or bathymetric points and DoC / MSDoC

LEGEND	DEFINITIONS	GEODETIC SETTINGS	PLOT NOTES	CONTROL POINT VERIFICATION
<ul style="list-style-type: none"> Water Level Topo / Bathymetry Projected Topo / Bathymetry +VSDV T.O.P. Point No Data (obstruction, loss of signal) Overlaid Data (if applicable) 	<p>DoC - Depth of Cover</p> <p>T.O.P. - Top of Pipe (or Cable, Conduit, etc.)</p> <p>+VSDV - Positive aspect of vertical confidence level. Represents a 95% likelihood that the true position of the target lies deeper than this point.</p> <p>MSDoC* - Minimum Statistical Depth of Cover. This reflects the measured distance from the +VSDV component to the Topo / Bathymetry line.</p>		<p>Overlaid data has been adjusted 0.4m in elevation to illustrate a more precise comparison to DoC Mapping's depth of cover data.</p>	<p>CONTROL POINTS WERE ESTABLISHED AND/OR REFERENCED BY DoC MAPPING TO ADJUST FOR HORIZONTAL AND VERTICAL VARIANCE DURING THE TIME OF THIS SURVEY. INFORMATION FOR THE CONTROL POINTS BELOW:</p> <p>PLEASE REFER TO THE "CONTROL POINT VERIFICATION SHEET" FOR MORE DETAILS ON THE CONTROL POINT(S) AND DoC MAPPING'S OBSERVATIONS.</p>



DEPTH OF COVER STUDY
DATE(S): 6/28/2020

IMU Data Overlay

PREPARED FOR: